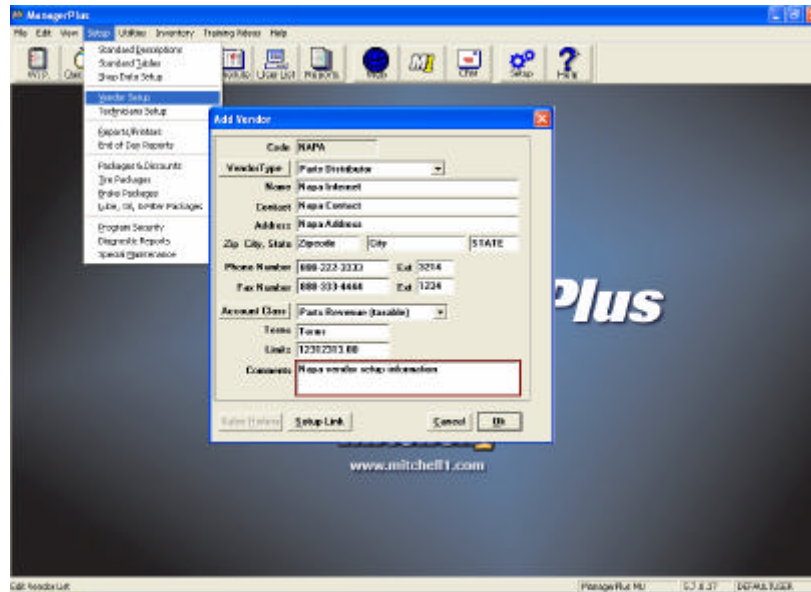


OnDemand5 Manager/ManagerPlus Version 5.7

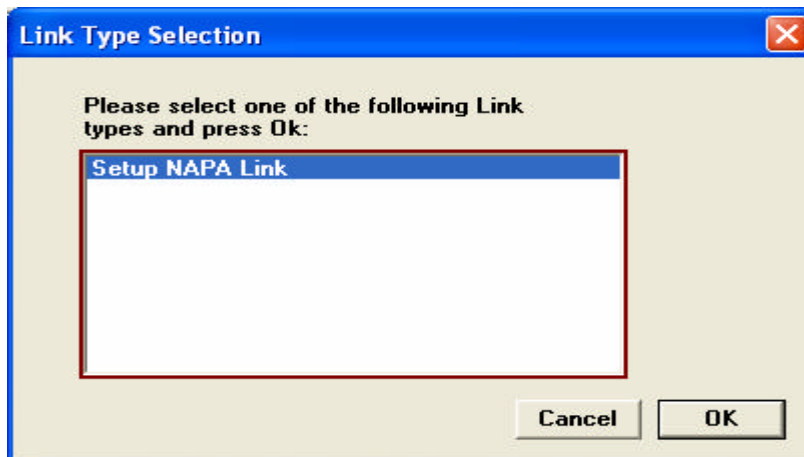
NAPA eProcurement and DialUp Access Vendor Setup

Note: You must have Manager/ManagerPlus version 5.7 and NAPA Catalog installed on your computer before proceeding to the following instructions.

1. Open Manager/MangerPlus Program
2. Select **Vendor Setup** option from the **Setup** menu.
3. Click **Add** button and enter your vendor information.



4. Click **Setup Link** button. The Link Type Selection dialog will display.



5. Select **Setup NAPA Link** and click **OK** button. The NAPA Store Setup dialog will display.

The screenshot shows the 'NAPA Store Setup' dialog box. Under 'Vendor Information', the Code is 'NAPA' and the Vendor Name is 'Napa Internet'. Under 'Vendor Provided Information', the 'Internet Connection (eProcurement)' radio button is selected. The Store ID field contains '700001995' and the TAMS Customer ID field contains 'D01000TEST'. The 'Modem Connection (Access)' radio button is unselected. The Phone Number, TAMS Customer ID, and Modem Selection fields are empty. The Modem Selection dropdown menu is set to 'U.S. Robotics 56K FAX EXT'. At the bottom, there are 'Delete', 'Save', and 'Cancel' buttons.

NAPA eProcurement setup

The screenshot shows the 'NAPA Store Setup' dialog box. Under 'Vendor Information', the Code is 'NAPADIAL' and the Vendor Name is 'Napa DialUp'. Under 'Vendor Provided Information', the 'Modem Connection (Access)' radio button is selected. The Store ID and TAMS Customer ID fields are empty. The Phone Number field contains '9.1678-556-2130' and the TAMS Customer ID field contains 'D01000TEST'. The Modem Selection dropdown menu is set to 'U.S. Robotics 56K FAX EXT'. At the bottom, there are 'Delete', 'Save', and 'Cancel' buttons.

NAPA Dial-Up setup

6. Choose your options for accessing NAPA: **Internet Connection (eProcurement)** for setup an eProcurement link or **Modem Connection (Access)** for setup a Dial-Up connection. Enter your vendor credentials (Store ID, & TAMS Customer ID, if you choose modem connection, then you also need to select your modem). Click **Save** button to save your vendor information. You will be returned to the Add Vendor dialog.
7. Click **OK** button to save the NAPA eProcurement or Dial-Up vendor Link that you created. Now you will be returned to the Vendor Setup dialog.
8. Click **OK** button again to complete your NAPA vendor setup.

Now you are ready to access NAPA catalog directly from Manager/ManagerPlus program to transfer parts from NAPA catalog. You can now price check and order parts through your NAPA eProcurement link.

Direct access to NAPA catalog from Manager/ManagerPlus

ManagerPlus

LastName, FirstName: 2000 Honda Accord LX

Customer: Vehicle: Order: Revision: History: Repair Order # 000803

Written By: (name) Hot # Odom. In: 53240 Prev Odom. 0

Time	Rate	Description	Qty	Extended	Sale	Price	List	Part #	MfgCode	Tech Name	Cost	Est. Parts
0.00		BRK CALIPER	1.00	84.26	84.26	84.26	72.86	19-27	A1	Please Select.	42.13	0.00
0.00		BRK CALIPER (CORE)	1.00	35.00	35.00	0.00	35.00	19-27	A1	Please Select.	35.00	0.00
0.00		BRK CALIPER	1.00	84.26	84.26	84.26	72.86	19-27	A1	Please Select.	42.13	0.00
0.00		BRK CALIPER (CORE)	1.00	35.00	35.00	0.00	35.00	19-27	A1	Please Select.	35.00	0.00
0.00		Remanufactured Starter	1.00	340.22	340.22	340.22	260.75	07	DNT	Please Select.	170.11	0.00
0.00		Remanufactured Starter	1.00	80.00	80.00	80.00	40.00	07	DNT	Please Select.	40.00	0.00
0.00		Remanufactured Starter	1.00	164.24	164.24	164.24	251.00	07	UST	Please Select.	82.12	0.00
0.00		Remanufactured Starter	1.00	100.00	100.00	100.00	50.00	07	UST	Please Select.	50.00	0.00
0.00				0.00	0.00	0.00					0.00	0.00

Invoice: Parts Labor Sub Total Haz Mat. Supplies Tax Total
Estimate: 922.98 0.00 922.98 0.00 5.00 76.56 1004.54

Buttons: Labor, Parts, Jobs, Cancel, Parts, Print, Synch, 30/60/90, Repair, Pass, NAPA

Ready | ManagerPlus MU | 5.7.0.37 | DEFAULTUSER

ManagerPlus

LastName, FirstName: 2000 Honda Accord LX

Customer: Vehicle: Order: Revision: History: Repair Order # 000803

Written By: Napa Parts Catalog and Ordering 5.00.

Position: 5:00 PM 02/24/2005 Ref #

Buttons: Labor, Parts, Jobs, Cancel, Parts, Print, Synch, 30/60/90, Repair, Pass, NAPA

Ready | ManagerPlus MU | 5.7.0.37 | DEFAULTUSER

NAPA Parts Viewer

- Brake Systems
 - Anti-Lock Brake System Parts
 - Brake Drums
 - Brake Hoses and Cables
 - Brake Pads & Shoes
 - Callipers & Calliper Hardware
 - Master Cylinders, Kits & Proportion
 - Pedal Pads
 - Power Boosters
 - Rotors
 - Shocks

Part No.	Description	Price	Line Code
<input type="checkbox"/> 0930315	Brake Drum-Rear Comment: Gas, Fuel Injected Sedan With Drum Brakes Related Parts: WATERLESS HAND CLEANER, BRAKE LINES, QUIET BRAKE, GREASE GONG	\$99.82	BA
<input type="checkbox"/> 4401620	Brake Drum-Rear Related Parts: WATERLESS HAND CLEANER, BRAKE LINES, QUIET BRAKE, GREASE GONG	\$83.82	TS
<input type="checkbox"/> 6401620	Brake Drum-Rear Related Parts: WATERLESS HAND CLEANER, BRAKE LINES, QUIET BRAKE, GREASE GONG	\$80.25	UP

Buttons: Napa Access, Add Part, Edit Part, Delete Part, Cancel, Transfer